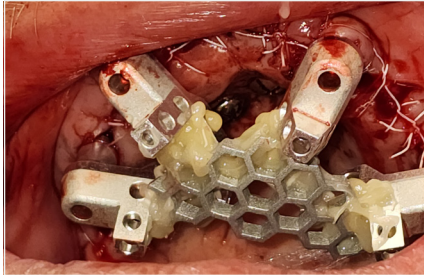


1. Place OptiSplints on MIUs

After implant and MUA placement, but prior to suturing, place one OptiSplint scan body on each MUA, and rotate until the horizontal wings are touching or close to touching. Hand tighten each OptiSplint.



2. Lute Frame to OptiSplints

Important: Ensure the frame is making at least partial contact with each OptiSplint scan body prior to luting.

Lute the frame to the OptiSplint scan bodies using an ultra-low shrinkage material. Adjust with cutters to fit if necessary. Remove luted OptiSplint assembly once cured.



3. Extraoral Scan

Scan 1

Two options:

Dr. Scans: Scan with approved lab or IOS scanner. Submit .STL files to ROE via upload portal (step 6).

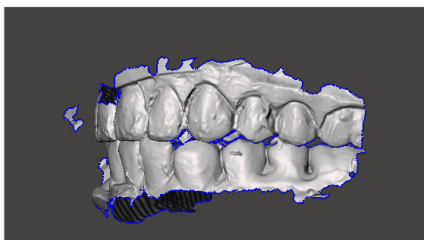
ROE Scans: Mail to ROE for a high resolution scan.



4. Denture Scan Protocol

Scans 2 & 3

- Seat healing caps on each MUA and suture.
- Reline the patient's denture(s) with PVS. Place in the mouth and let set, in occlusion.
- With PVS set, open and scan opposing, scan denture, close and scan bite.
- Remove denture and take 360° IOS scan of the denture, capturing a clear image of the intaglio and healing caps.



5. Double Arch Protocol

If double arch, complete wash impression of both arches and allow material to set while patient is in the bite. Remove both prostheses, scan 360, paying special attention to the healing caps. Handhold dentures for bite scan. If bite was off, capture PVS bite registration and extraorally scan the bite using this registration.



6. Upload Files & Complete Rx

www.roedentallab.com/upload

Submit your scans via the IOS portal, OR export your .STLs and upload to the ROE portal. Upload the completed Rx and [patient photographs](#) via the ROE portal.