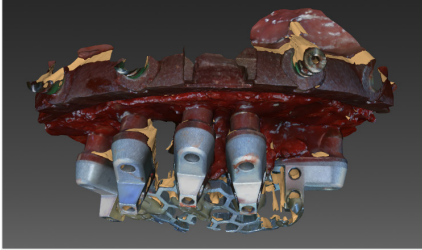


1. Pre-Surgical Scan

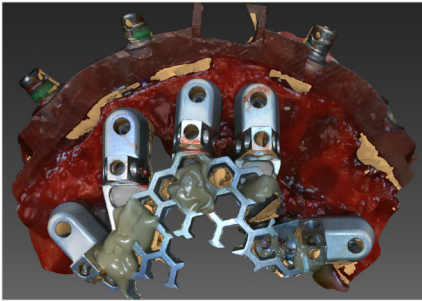
Scan 1

On the day of surgery, after delivering the Fixation Base, capture a IOS scan including the Fixation Base and any remaining teeth.



2. Place OptiSplints on MUAs

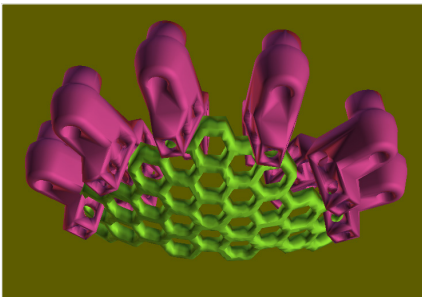
Follow CombiGuide protocol to reduce bone, place implants, and seat MUAs. Place one OptiSplint scan body on each MUA, and rotate until the horizontal wings are touching or close to touching. Hand tighten each OptiSplint.



3. Lute Frame to OptiSplints

Important: Ensure the frame is making at least partial contact with each OptiSplint scan body prior to luting.

Lute the frame to the OptiSplint scan bodies using an ultra-low shrinkage material. Adjust with cutters to fit if necessary. Remove luted OptiSplint assembly once cured.



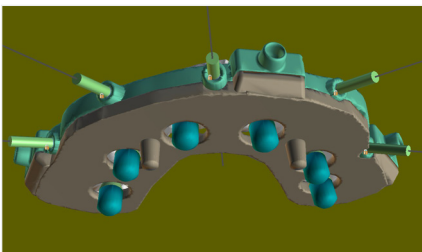
4. Extraoral Scan

Scan 2

Two options:

Dr. Scans: Scan with approved lab or IOS scanner. Submit .STL files to ROE via upload portal (step 6).

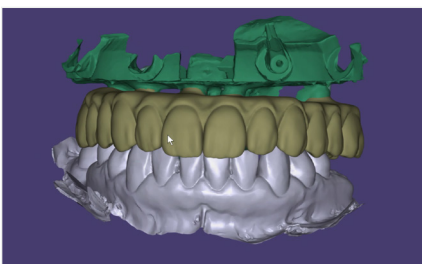
ROE Scans: Mail to ROE for a high resolution scan.



5. Post-Surgical Intraoral Scan

Scan 3

Place Carrier Guide on Fixation Base. Seat healing collars and capture an IOS scan of the tissue with healing collars seated (no OptiSplint).



6. Upload Files & Complete Rx

www.roedentallab.com/upload

Submit your scans via the IOS portal, OR export your .STLs and upload to the ROE portal. Upload the completed Rx and [patient photographs](#) via the ROE portal.