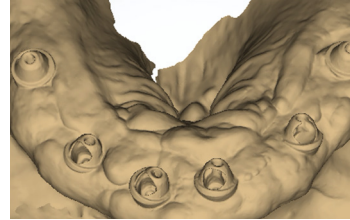




1. Remove the prosthetic from mouth.



2. Capture digital or analog impressions of the tissue and multi unit abutments (MUA's). Upload or send along with your case to the lab.



3. Add an MUA analog to each site on the prosthetic.



4. Acquire a flask, or any vessel that can hold casting stone.



5. Mix and pour casting stone into the flask.



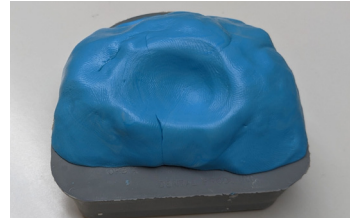
6. Ensure the vessel is filled to the length of the analogs.



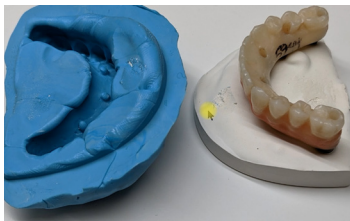
7. Set the prosthetic down in the stone, and let the stone set up and become completely hard. It is important to ensure that the intaglio of the prosthetic is sitting a little bit above, not touching, the stone.



8. Take a lab putty material, 1:1 ratio, and knead it together to reach a nice wad of putty.



9. Wrap the putty around and over to engulf the prosthetic. Push putty in to capture the intaglio of the prosthetic.



10. Once the putty is set, remove the putty from the prosthetic. Alternatively, if the vessel used for casting stone is rubbery, you can remove the cast and prosthetic from the vessel.



11. With the analog model, the negative of the prosthetic, the bite, and impression of tissue and MUA, we have everything needed to create a prototype.