

iJIG Quick Step Records

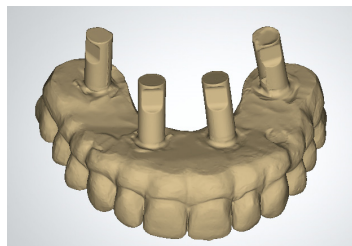


Single arch means 'full-arch prosthetic on MUA abutments' and only one arch is to be restored. Double arch means both arches are to be restored. Contact ROE with any questions on the records or the process. **iJIG Scan Analogs must be utilized (call ROE to order, see images below) not compatible with Zimmer, Implant Direct, MIS, Camlog, Conelog implants. Must use these company's OEM analogs! Must now scan the ridge and MUA abutments**

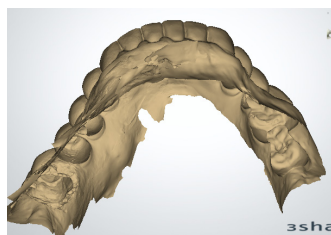
Single Arch

Scan implant prosthetic outside mouth

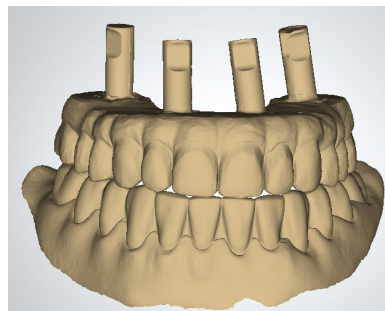
- o All areas including ROE iJIG Scan Analogs



Scan opposing teeth and some tissue



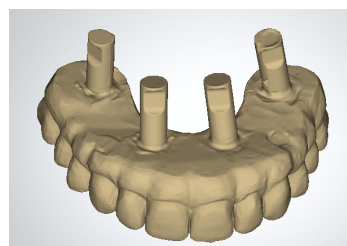
Screw down the appliance in the mouth and scan Bite registration



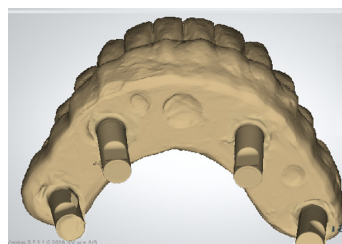
Double Arch

Scan implant prosthetic outside mouth

- o All areas including ROE iJIG Scan Analogs

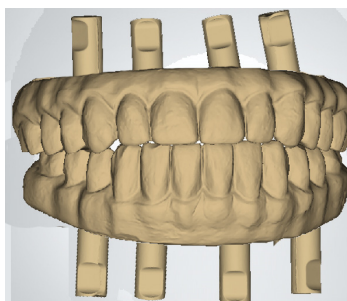


Scan opposing implant prosthetic outside mouth



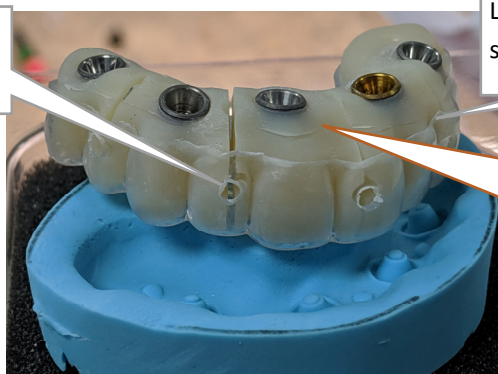
- o All areas including ROE iJIG Scan Analogs

Screw down both appliance in the mouth and scan the bite.

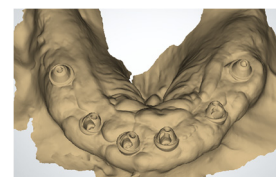


iJIG attributes

Luting holes between sections



Lute between the sections, just like a fit



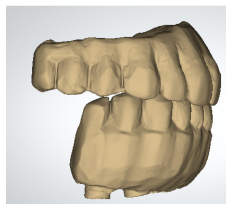
Tissue/MUA scan means iJIG now meets the tissue

Important iJIG Records

Analogs must be used



Can add distal extensions



Send Photo info@roedentallab.com



Full face full smile with temp