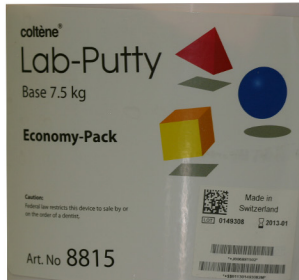


# Steps to Duplicating a Full Denture

1



Silicone Material

2



Acclerant

3



Knead together

4



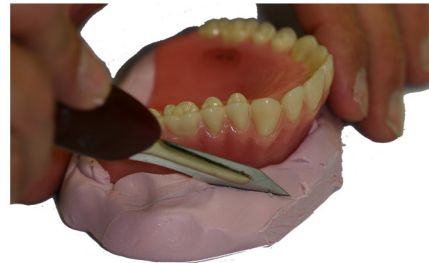
Force into intaglio surface

5



Force into ridge area

6



Cut edges (after it sets)

7



Add separator

8



Apply to silicone

9



Wax balls for spruing

10



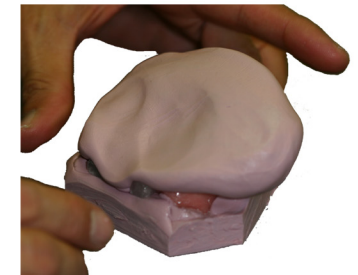
More silicone

11



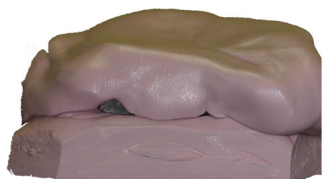
Force Silicone into palate

12



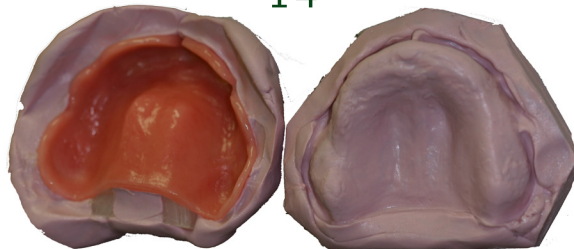
Complete the silicone flask

13



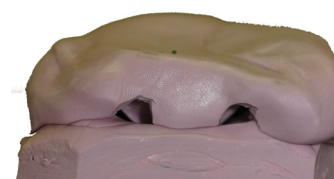
Silicone flask complete

14



Separate and remove denture

15



Send to Lab



ROE Dental Laboratory  
7165 E. Pleasant Valley Rd  
Independence, OH 44131  
800 228 6663  
[www.roedentallab.com](http://www.roedentallab.com)